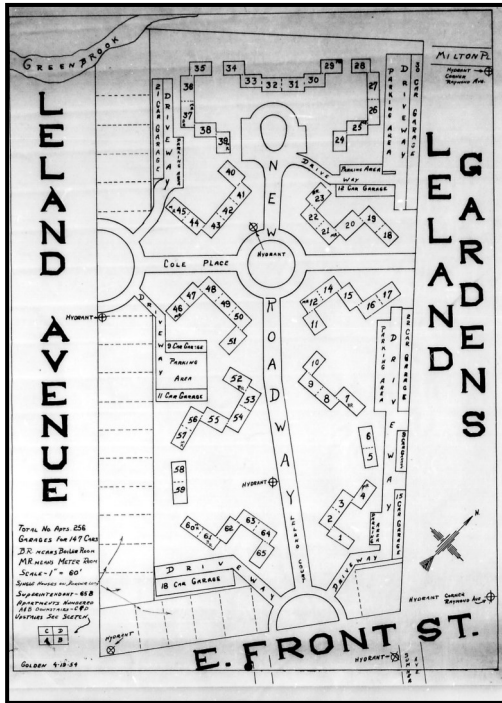


Leland Gardens Survey Map, April 1949



Images:

Cover: Cole Family Residence,
ca. 1880s-1890s., Historical
Photograph Collection.

Inside Top : Excerpt, Courier-News,
February 4, 1950, pg. 5.

Inside Below: Rental Ad, Courier-News,
March 4, 1950, page 14.

More than old books

Plainfield Public Library's Local History, Genealogy & Special Collections Department offers more than just old books! Our Local History Collection, one of the largest in Union County, is composed of historical documents, photographs, blueprints, maps, newspapers, personal papers, and local organizations' records of significance in Plainfield and the surrounding communities. Our unique collections include Local Authors, Fine Arts, and Diversity Studies. We have two genealogists on staff, who can assist you with your own family history research.

Plainfield Public Library

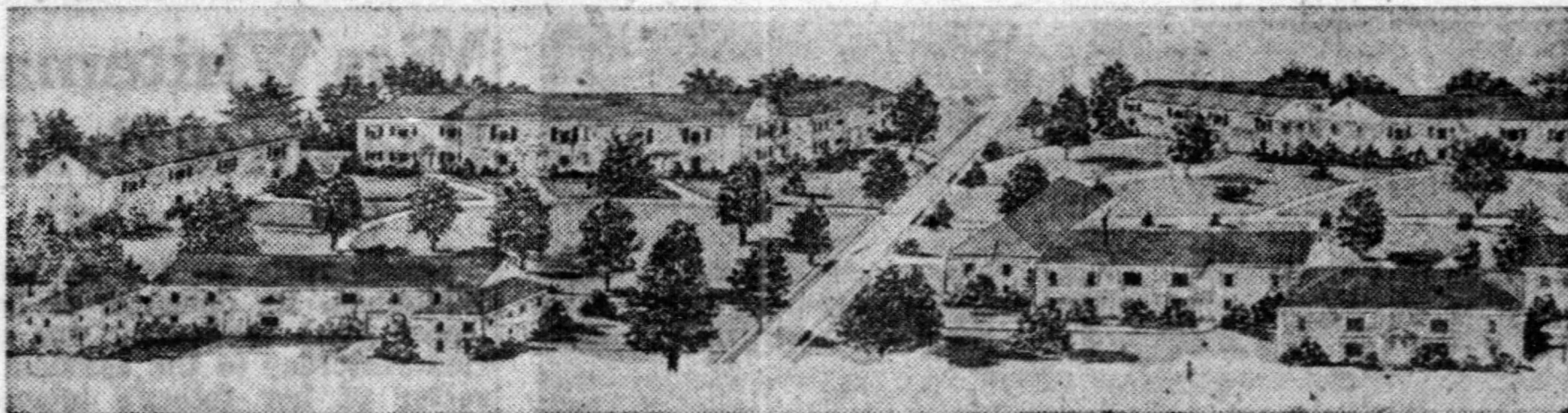
Local History Department
800 Park Avenue
Plainfield, NJ 07060
www.plfdpl.info
908-757-1111 x1400
localhistory@plfdpl.info

Leland Gardens

ESTABLISHED 1949

A Brief History





NEW APARTMENT OPENS—Leland Gardens, E. Front St. and Leland Ave., is ready for partial occupancy. It is Plainfield's newest garden apartment

and its 64 buildings will provide apartments for 256 families. Eleven of the 11 acres on the site will be used for gardens, walks, lawns, play areas and parking.

History

Plans for the 256-unit garden apartment project, to be known as Leland Gardens, were filed with the Plainfield Building Department in June 1949. It was the largest project of its kind ever constructed in Plainfield—costing over \$1 million and taking up a total of 14 acres. The apartments were completed and opened for business in 1950.

Cole Family

Leland Gardens was constructed on the old Estate of George W. Cole, which originally belonged to his ancestor, Mulford Cole. The Coles were farmers, and later ran a local funeral home. Mulford was a direct descendant of the Revolutionary War soldier, Jonathan Mulford, and of early New Jersey governor, Sir Philip Carteret.

PLAINFIELD

Leland Garden Apts.

EAST FRONT ST. and LELAND AVE.

New modern apartments; all outside rooms; semi-private entrances; complete kitchens have G.E. refrigerators with freeze units, 4-burner ranges, generous storage and dining space.

7 Children's Playgrounds

Everything is handy; Schools, churches and shopping only 3 blocks away.

SHORT DISTANCE FROM
CENTRAL R.R.

3 Rooms—\$75 Month

4 Rooms—\$93 Month

Garages \$6 month or free parking area.
Renting Agent on Property.

H. ABRAMS

Phone Plainfield 6-0512 or 6-0181